

**Profits:** Fast Profits - Explosive Moves



**Profits:**

VWAP Momentum  
Profit from Explosive moves  
in the first hour of trading



*VWAP Profits*

# VWAP Profits

*Quick Start Training*

# Monday: Quick Start

Why Strategy works so well  
The Production line Process  
The Classic Pattern  
Live Trading

*Quick Start Training*

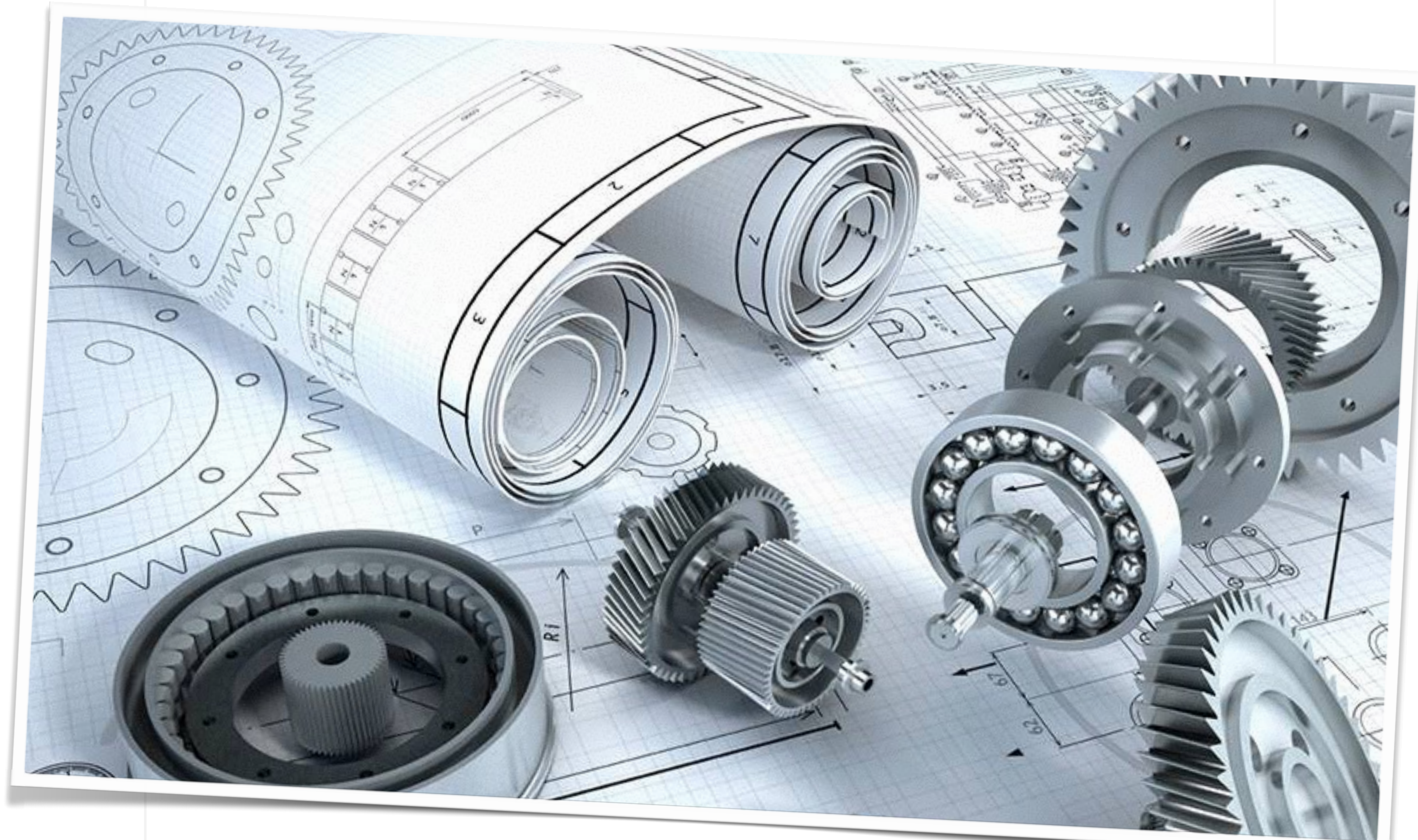
*VWAP Profits*

# Production Line Trading

*Quick Start Training*



# 1 – Mechanical Scan/Assess



A replaceable reason to look at an opportunity  
AND/OR choose a direction



## 2 – Visual Confirmation



Is the chart/price action behaving as expected?



# 3 – Trade Next Pullback



Look for a suitable entry



# 4 – Trade Management

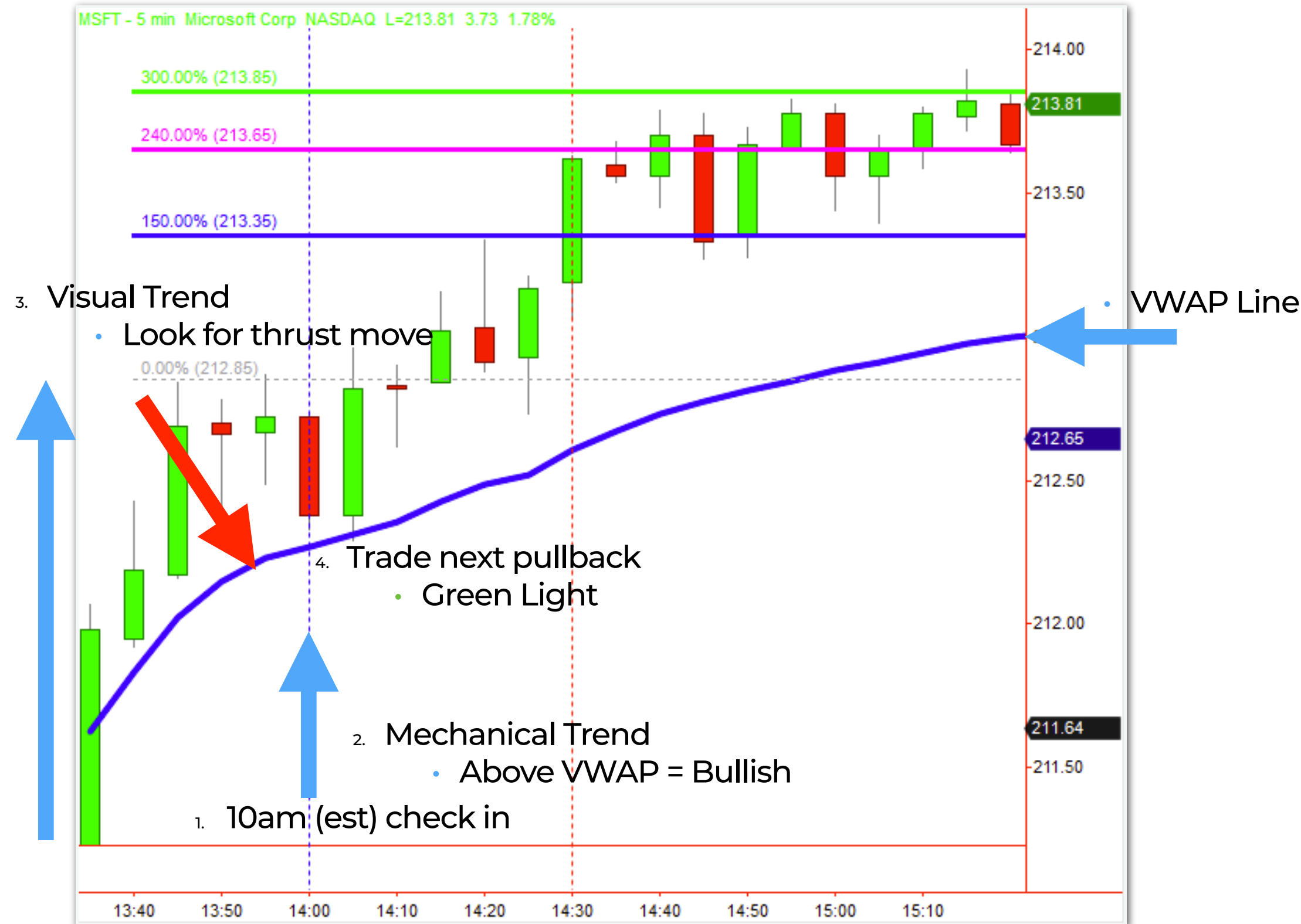


In Trade management rules



# 1-4 – Production Line Trading

## Time Check Steps



1. 10am (est) check in
2. Mechanical trend
  - Above VWAP = Bullish
  - Below VWAP = Bearish
3. Visual Trend
  - Look for “thrust move”
4. Trade next pullback
  - Green Light

At 10am - Check for the “**..simple set up..**”  
**GREEN** light / **RED** light indication



# The “...Classic...” Pattern



3 - Trending bars  
1 - correction bar



FB - \$510.00

FB - VWAP

Stock Gain

\$2.85 per share

Option Gain

\$1.70 per share

29.3% ROC

Notes on Risk - \$250 risk profile  
To demonstrate model performance

FB - 5 min Facebook Inc NASDAQ L=287.15 7.45 2.66%



VWAP Rule #4 - T.T.E. Management



SQ - \$522.00

SQ - VWAP

Stock Gain  
\$2.15 per share

Option Gain  
\$1.74 per share

29.7% ROC

Notes on Risk - \$250 risk profile  
To demonstrate model performance



VWAP Rule #4 - T.T.E. Management



**FB - -\$210.00**

FB - VWAP

**Stock Gain**

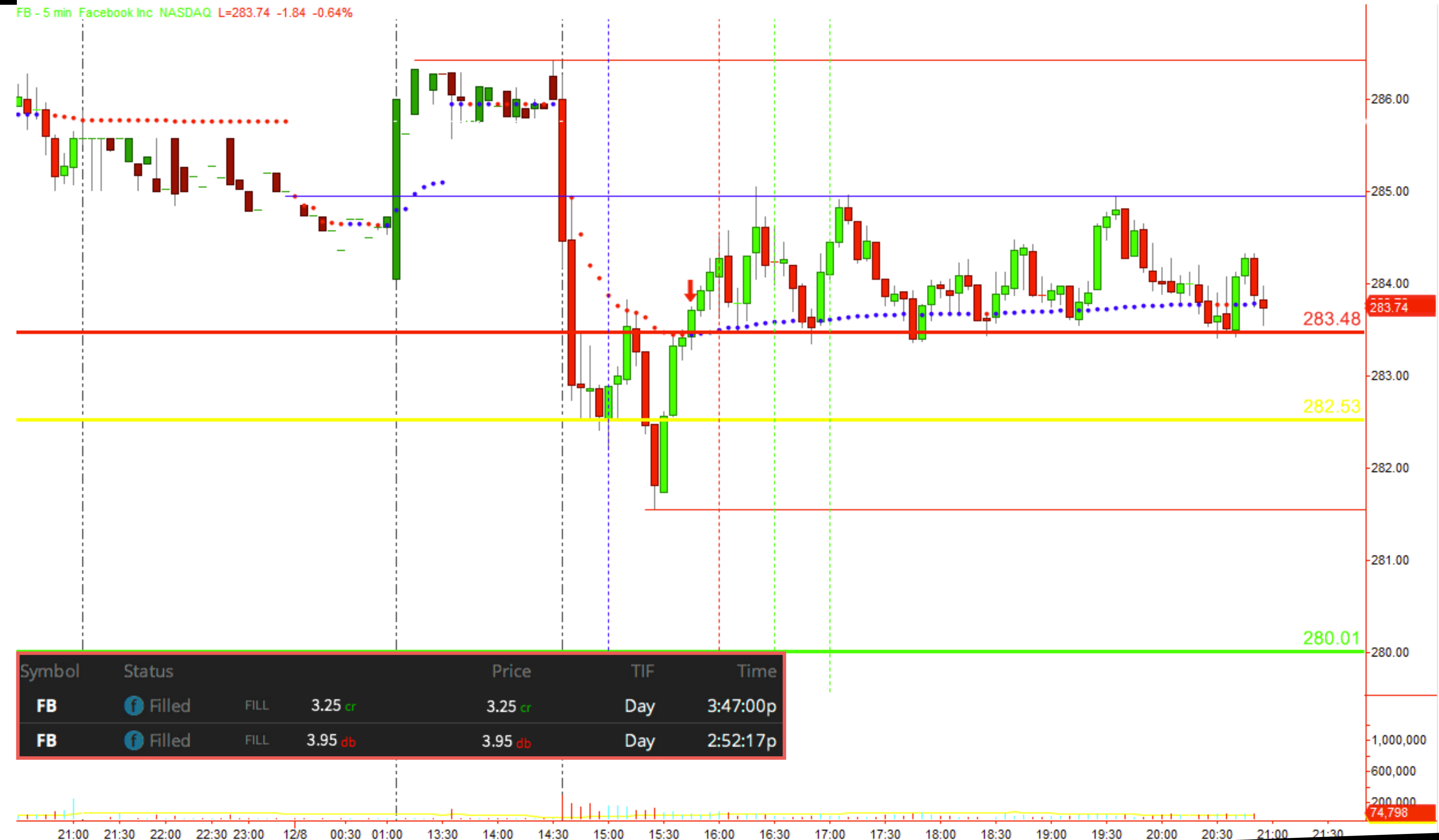
-\$1.25 per share

**Option Gain**

-\$0.70 per share

-17.7% ROC

Notes on Risk - \$250 risk profile  
To demonstrate model performance



**VWAP Rule #4 - T.T.E. Management**

QCOM - \$576.00

QCOM - VWAP

Stock Gain

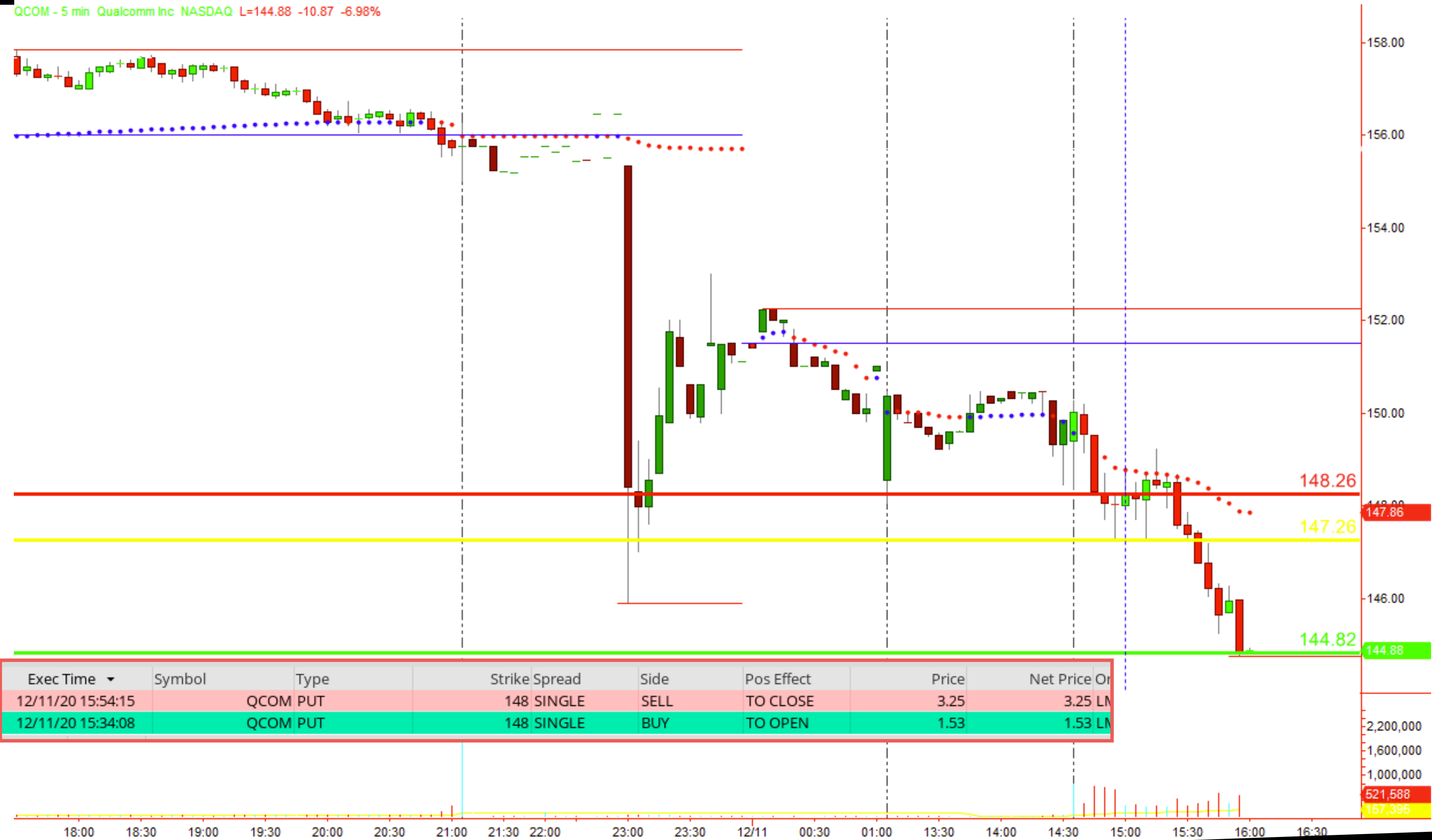
\$2.55 per share

Option Gain

\$1.72 per share

52.93% ROC

Notes on Risk - \$250 risk profile  
To demonstrate model performance



VWAP Rule #4 - T.T.E. Management



DIS - \$498.00

DIS - VWAP

Stock Gain

\$3.00 per share

Option Gain

\$1.66 per share

43.7% ROC

Notes on Risk - \$250 risk profile  
To demonstrate model performance



VWAP Rule #4 - T.T.E. Management



# Profits: Fast Profits - Explosive Moves



## Profits:

VWAP Momentum  
Profit from Explosive moves  
in the first hour of trading



*VWAP Profits*

# VWAP Profits

*Quick Start Training*



# Tuesday: Quick Start

Scanning for explosive stocks

Placing trades with stock

Placing trades with options



# 3 – The “...Classic...” Pattern

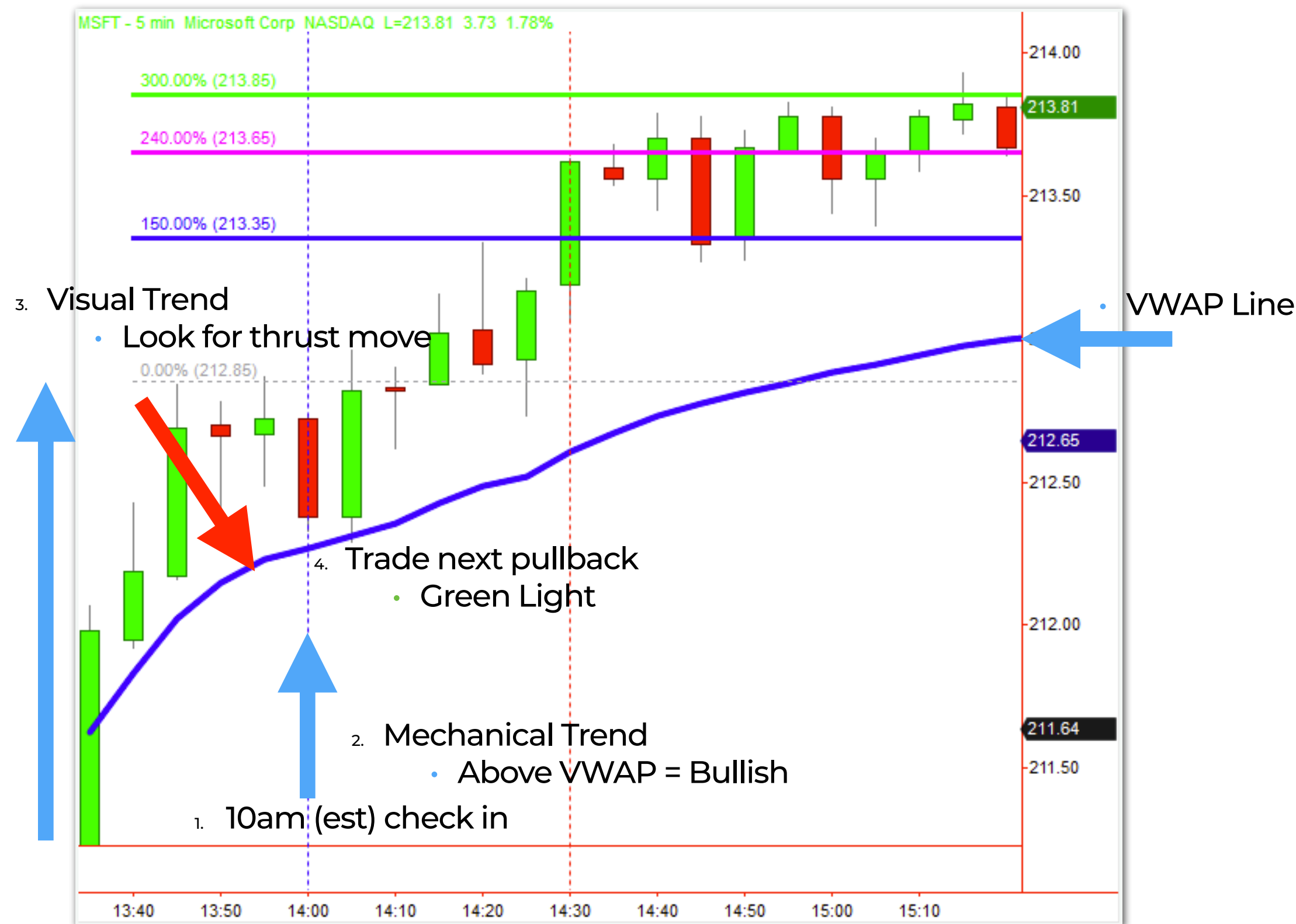


Trade The Next Pullback



# 1-4 – Production Line Trading

## Time Check Steps



1. 10am (est) check in
2. Mechanical trend
  - Above VWAP = Bullish
  - Below VWAP = Bearish
3. Visual Trend
  - Look for “thrust move”
4. Trade next pullback
  - Green Light

At 10am - Check for the “**..simple set up..**”  
**GREEN** light / **RED** light indication



# Scanning for explosive stocks

# 1 – Mechanical Scan

• Net change %

• Net change \$\$

• Volume

	Symbol	Prj	Last	Net Chg	Net %Chg	NpEarnings Durn	Volume Today	Volume Avg VolAvg	%Chg	Al...
1	All Stocks									
2	TSLA	T	597.30	29.70	5.2%	50 Days	431,905	44,031	15.9	0.91
3	RDS.B	R	34.06	1.61	5.0%	58 Days	23,945	4,144,722	1.3	0.67
4	RDS.A	R	35.49	1.65	4.9%	58 Days	48,011	6,863,532	0.5	0.66
5	EOG	E	48.50	1.62	3.5%	65 Days	809	5,993,458	3.3	0.65
6	HSBC	H	26.78	0.89	3.4%	56 Days	22,318	3,591,395	2.5	0.70
7	LABU(HE	D	89.75	3.12	3.6%		1,976	1,448,830	17.4	1.05
8	GDXJ	V	51.58	1.55	3.1%		22,551	8,397,404	(3.6)	0.24
9	HES	H	48.70	1.52	3.2%	57 Days	419	2,436,460	1.4	0.63
10	BHP	B	57.48	1.69	3.0%	-102 Day	1,951	2,147,163	3.9	0.74
11	DKS	D	58.50	1.69	3.0%	84 Days	500	2,421,403	(2.9)	0.60
12	SCHW	C	50.17	1.39	2.8%	44 Days	375	13,587,933	4.7	0.74
13	RCL	R	81.05	2.24	2.8%	58 Days	14,371	7,539,849	8.6	0.74
14	CXO	C	59.10	1.62	2.8%	56 Days	239	3,473,366	0.1	0.66
15	WPM(HE	V	40.21	1.07	2.7%	69 Days	8,196	2,033,630	(5.2)	0.18
16	UAL	U	46.28	1.23	2.7%	43 Days	90,861	23,001,279	12.9	0.85
17	COP	C	40.60	1.04	2.6%	58 Days	3,384	12,427,505	(0.2)	0.65
18	SPG	S	84.75	2.18	2.6%	69 Days	11,760	5,987,366	1.8	0.70
19	AEM(HB	A	67.49	1.62	2.5%	57 Days	4,043	1,229,283	(2.6)	0.25
20	NEM	N	60.13	1.31	2.2%	58 Days	20,037	6,215,206	(4.6)	0.18
21	DFS	D	78.00	1.83	2.4%	50 Days	1,219	3,013,873	1.8	0.59

## Pre-Market Activity

1. Pre-Market 9am
2. Sort by...
  - \$\$\$ up/down
  - % up/down
3. Compare with
  - Volume shared traded

Pre-Pre-Market 4am-8am

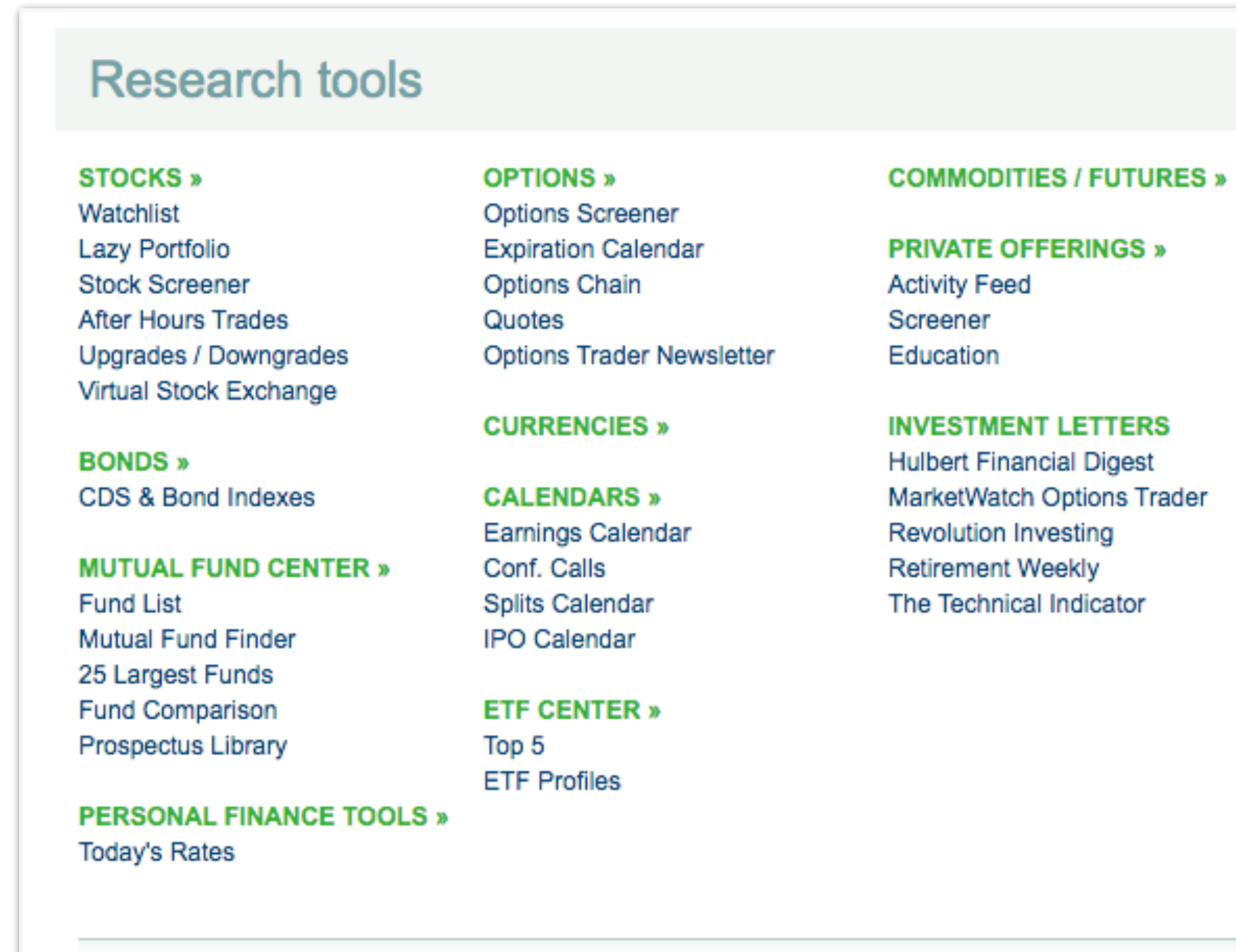
Pre-Market 8am-9:30am

After-Market 4pm-8pm



# 1 – Mechanical Scan

## Pre-Market Activity



1. Site
  - nasdaq etc
  - Market Watch
  - Finviz
2. Criteria
  - 1-mill ave. shares traded
  - Has options
  - Good ATR- range
  - high beta >1

MarketWatch.com/tools

# 1 – Mechanical Scan

• Net change %

• Net change \$\$

• Volume

	Symbol	Chg	Last	Net Chg	Net %Chg	NpEarnings Durn	Volume Today	Volume Avg VolAvg	%Chg	Al...
1	All Stocks									
2	TSLA	T	597.30	29.70	5.2%	50 Days	431,905	44,031	15.9	0.91
3	RDS.B	R	34.06	1.61	5.0%	58 Days	23,945	4,144,722	1.3	0.67
4	RDS.A	R	35.49	1.65	4.9%	58 Days	48,011	6,863,532	0.5	0.66
5	EOG	E	48.50	1.62	3.5%	65 Days	809	5,993,458	3.3	0.65
6	HSBC	H	26.78	0.89	3.4%	56 Days	22,318	3,591,395	2.5	0.70
7	LABU(HE	D	89.75	3.12	3.6%		1,976	1,448,830	17.4	1.05
8	GDXJ	V	51.58	1.55	3.1%		22,551	8,397,404	(3.6)	0.24
9	HES	H	48.70	1.52	3.2%	57 Days	419	2,436,460	1.4	0.63
10	BHP	B	57.48	1.69	3.0%	-102 Day	1,951	2,147,163	3.9	0.74
11	DKS	D	58.50	1.69	3.0%	84 Days	500	2,421,403	(2.9)	0.60
12	SCHW	C	50.17	1.39	2.8%	44 Days	375	13,587,933	4.7	0.74
13	RCL	R	81.05	2.24	2.8%	58 Days	14,371	7,539,849	8.6	0.74
14	CXO	C	59.10	1.62	2.8%	56 Days	239	3,473,366	0.1	0.66
15	WPM(HE	V	40.21	1.07	2.7%	69 Days	8,196	2,033,630	(5.2)	0.18
16	UAL	U	46.28	1.23	2.7%	43 Days	90,861	23,001,279	12.9	0.85
17	COP	C	40.60	1.04	2.6%	58 Days	3,384	12,427,505	(0.2)	0.65
18	SPG	S	84.75	2.18	2.6%	69 Days	11,760	5,987,366	1.8	0.70
19	AEM(HB	A	67.49	1.62	2.5%	57 Days	4,043	1,229,283	(2.6)	0.25
20	NEM	N	60.13	1.31	2.2%	58 Days	20,037	6,215,206	(4.6)	0.18
21	DFS	D	78.00	1.83	2.4%	50 Days	1,219	3,013,873	1.8	0.59

## Pre-Market Activity

1. Pre-Market 9am
2. Sort by...
  - \$\$\$ up/down
  - % up/down
3. Compare with
  - Volume shared traded

Pre-Pre-Market 4am-8am

Pre-Market 8am-9:30am

After-Market 4pm-8pm



# Placing trades with stock

# VWAP Profits

## Single Order

1. Entry Order

The screenshot displays a trading interface for AAPL Stock. At the top, there are tabs for Strikes, Width, Quantity, Expirations, Swap, Undo/Redo, and Clear. Below these, the order details are shown: ORDER - AAPL Stock, Quantity 100, Limit Price 121.25, Order Type Limit, and TIF GTC. A BRACKET button is visible on the left. A price range slider at the bottom shows values from 121.21 db to 121.24 db, with a midpoint at 121.22 db. A red exclamation mark icon is present next to the 121.24 db value. A large orange button labeled REVIEW & SEND is at the bottom right.

*Quick Start Training*



# VWAP Profits

tastyworks - Bracket Order

**Order Entry Starting Point**

100 SHARES HTG

Limit Price 121.25

Total Cost 12,123.00 db

Time in Force GTC

Est BP Effect 6,062.50 db

**Close at Profit**

-100 SHARES STC

Estimated Profit 100.00 cr

Close Limit Price 122.25

Target Profit Percent 0.8%

Time in Force GTC

**Stop Loss**

-100 SHARES STC

Estimated Loss 50.00 db

Stop Trigger 120.75

Stop Type MKT

Stop Loss Percent 0.4%

Time in Force GTC

CLEAR REVIEW & SEND >

## Bracket Orders

1. Entry Order
2. Protective - Stop Order
3. Target Exit - Limit Order

# Quick Start Training

# Placing trades with options



# VWAP Profits

## Single Order

1. Entry Order

The screenshot displays a trading interface for entering a single order. At the top, there are tabs for 'Strikes', 'Width', 'Quantity', 'Expirations', 'Swap', 'Undo/Redo', and 'Clear'. Below these, the 'Order' section shows '1 Dec 4 3d 120 C BTO'. The 'AAPL' stock is selected with a 'Limit Price' of '1.45'. The 'Order Type' is set to 'Limit' and the 'TIF' is 'Day'. A 'BRACKET' button is visible on the left. A price range slider is shown with 'mid' at 1.36 db and 'nat' at 1.45 db. An orange 'REVIEW & SEND >' button is at the bottom right.

*Quick Start Training*

# VWAP Profits

tastyworks - Bracket Order

**Order Entry Starting Point**

1 Dec 4 3d 120 C **STC**

Limit Price  
1.45

Total Cost  
145.00 **db**

Time in Force  
GTC

Est BP Effect  
145.00 **db**

**Close at Profit**

-1 Dec 4 3d 120 C **STC**

Estimated Profit  
75.00 **cr**

Close Limit Price  
2.20

Target Profit Percent  
51.7%

Time in Force  
GTC

**Stop Loss**

-1 Dec 4 3d 120 C **STC**

Estimated Loss  
35.00 **db**

Stop Trigger  
1.10

Stop Type  
MKT

Stop Loss Percent  
24.1%

Time in Force  
GTC

**CLEAR** **REVIEW & SEND**

## Bracket Orders

1. Entry Order
2. Protective - Stop Order
3. Target Exit - Limit Order

*Quick Start Training*



# Profits: Fast Profits - Explosive Moves



## Profits:

VWAP Momentum  
Profit from Explosive moves  
in the first hour of trading



*VWAP Profits*

# VWAP Profits

*Quick Start Training*



# Wednesday: Trading Recap



**Profits:** Fast Profits - Explosive Moves



**Profits:**

VWAP Momentum  
Profit from Explosive moves  
in the first hour of trading



*VWAP Profits*

# VWAP Profits

*Quick Start Training*

# Thursday: Management & Tracking



# 4 – Trade Management



In Trade management rules



# 3 – T.T.E. Management



In the following **30-mins**  
Time Out - Target Out - Exit Out



# 3 – T.T.E. Management

Time.Target.Exit.



1. Time out
  - Exit after a set time
2. Target out
  - Exit at profit target
3. Exit out
  - Exit at acceptable loss

In the following **30-mins**  
**Time Out - Target Out - Exit Out**

# 3 – T.T.E. Management

Time.Target.Exit.



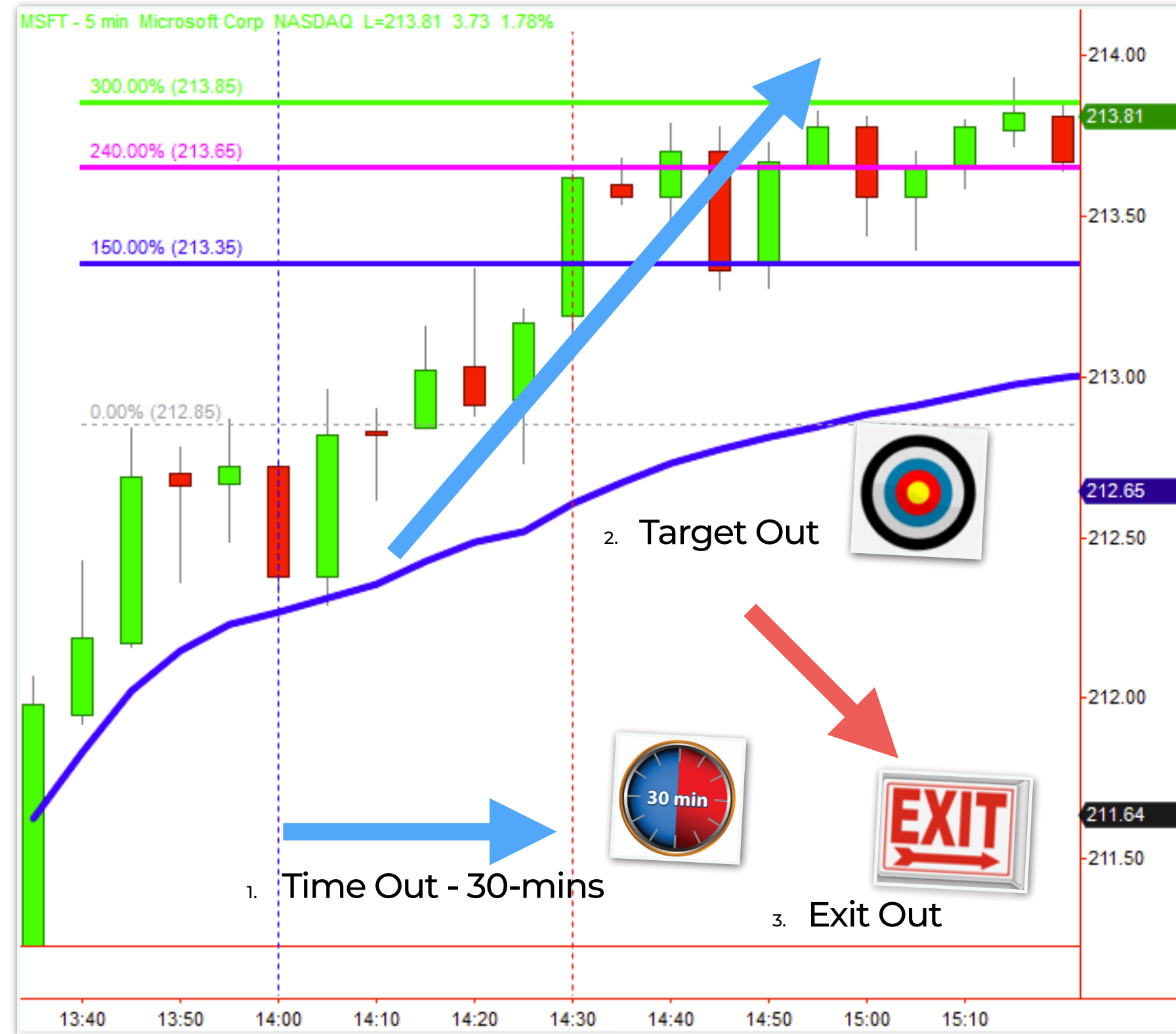
1. Time out
  - Exit after a set time
2. Target out
  - Exit at profit target
3. Exit out
  - Exit at acceptable loss

In the following **30-mins**  
**Time Out - Target Out - Exit Out**



# 3 – T.T.E. Management

Time.Target.Exit.

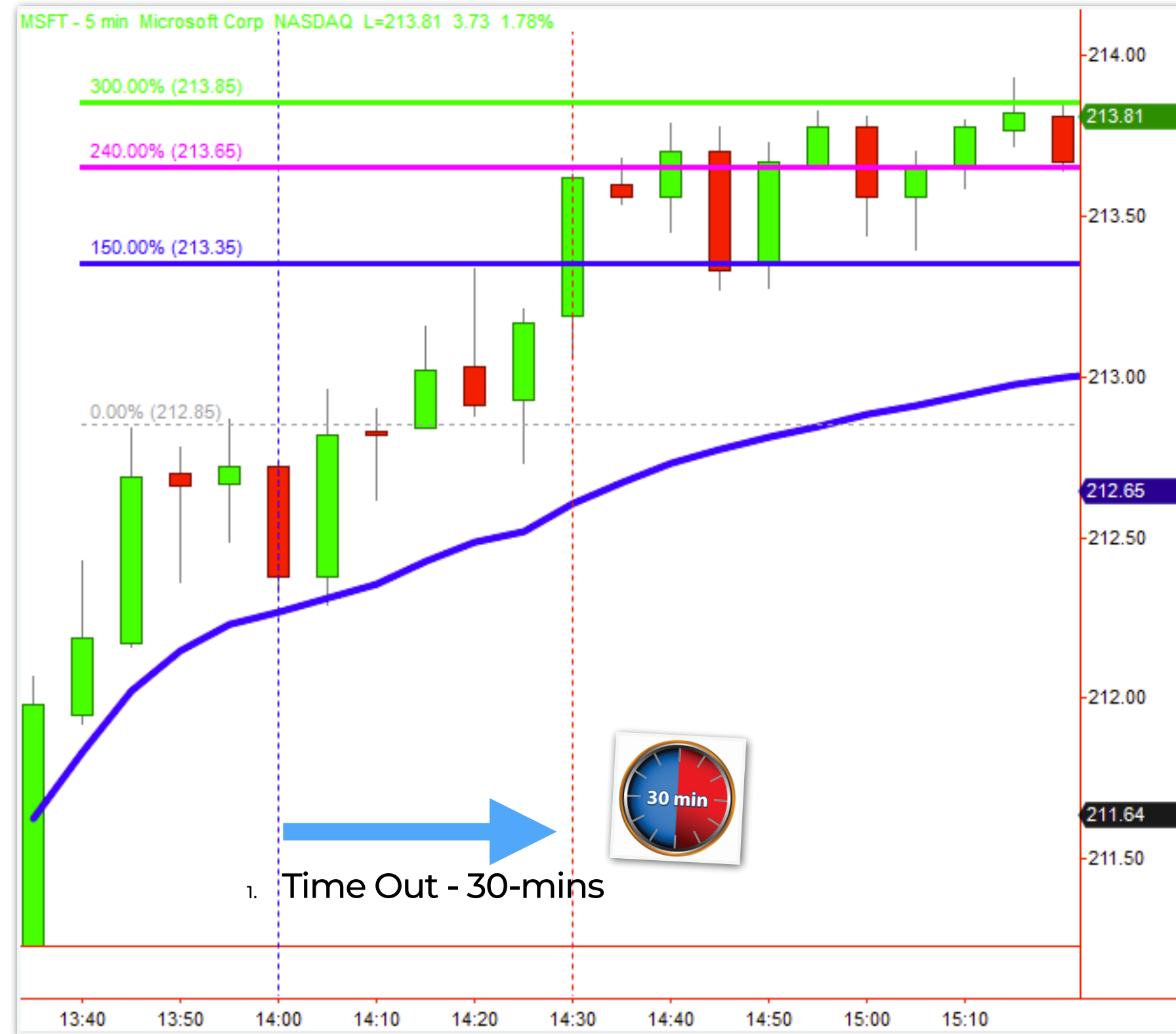


1. Time out
  - Exit after a set time
2. Target out
  - Exit at profit target
3. Exit out
  - Exit at acceptable loss

In the following **30-mins**  
**Time Out - Target Out - Exit Out**

# 3 - T.T.E. Management

## Time Out



1. Time out
  - No Trade
    - Trade Doesn't Trigger
    - 10.30-10.45
  - In Trade
    - 30min blocks
    - From entry
    - 2 time outs - Max

In the following **30-mins**  
**Time Out - Target Out - Exit Out**



# 4 – Trade Management



Position Size Calculator



# 4 – Trade Management



Position Size Calculator



# 4 – Trade Management



Tracking Trade Performance



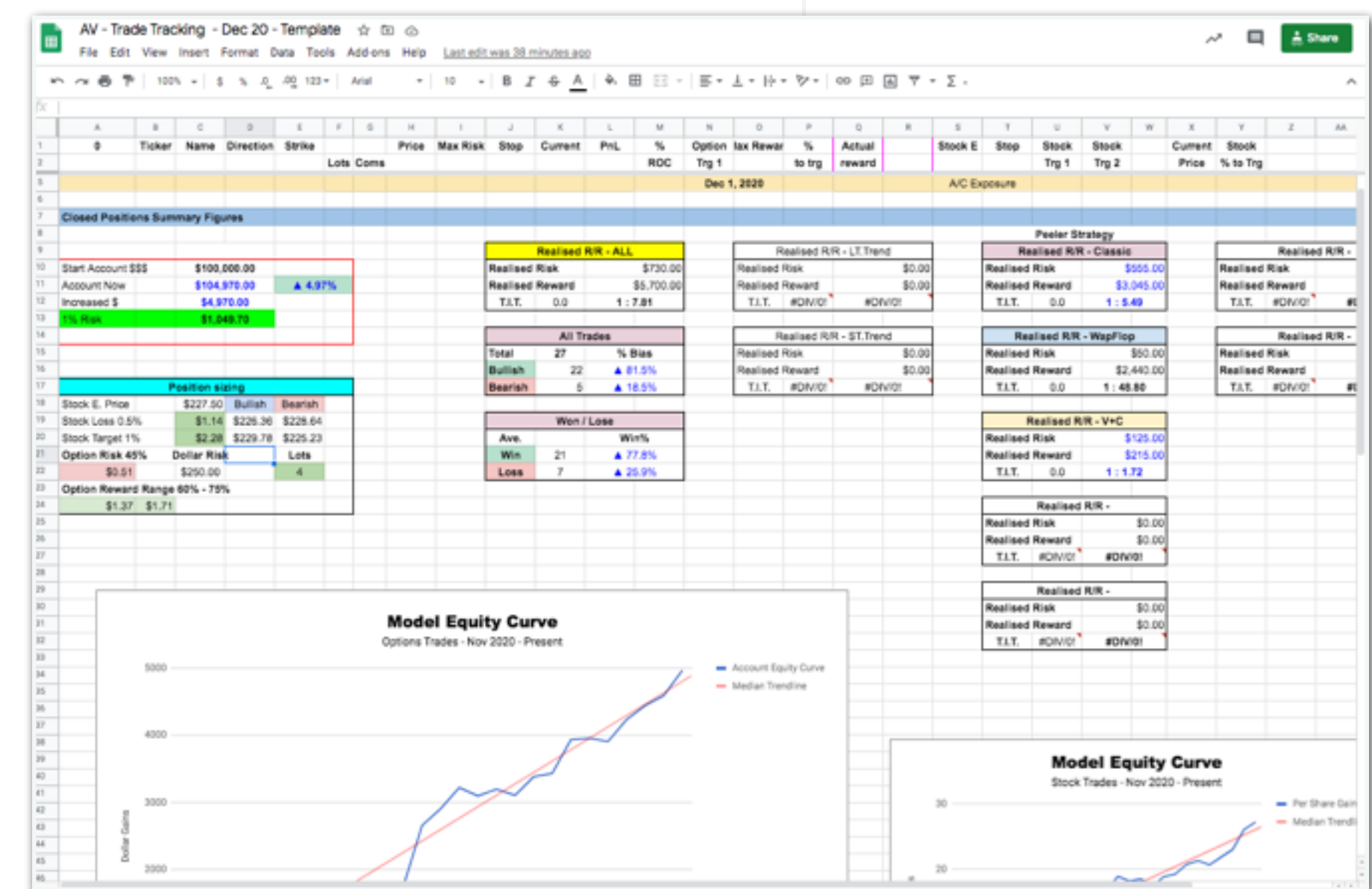
# 4 - Trade Management

AV - Trade Tracking - Dec 20 - Template

File Edit View Insert Format Data Tools Add-ons Help Last edit was 37 minutes ago

sets home 100% \$ % .0 .00 123 Arial 10 B I A

Position sizing			
Stock E. Price	\$223.20	Capital usage	
option Price	\$3.35	Bullish	Bearish
Stock Loss 0.5%	\$1.12	\$222.08	\$224.32
Stock Target 1%	\$2.23	\$225.43	\$220.97
Option Risk 45%	Dollar Risk	Lots	
\$0.50	\$500.00	9	
Option Reward Range 60% - 75%			
\$1.34	\$1.67		





# Profits: Fast Profits - Explosive Moves



## Profits:

VWAP Momentum  
Profit from Explosive moves  
in the first hour of trading



*VWAP Profits*

# VWAP Profits

*Quick Start Training*



# Friday: Review & 9 More Patterns



# 3 – The “...Classic...” Pattern

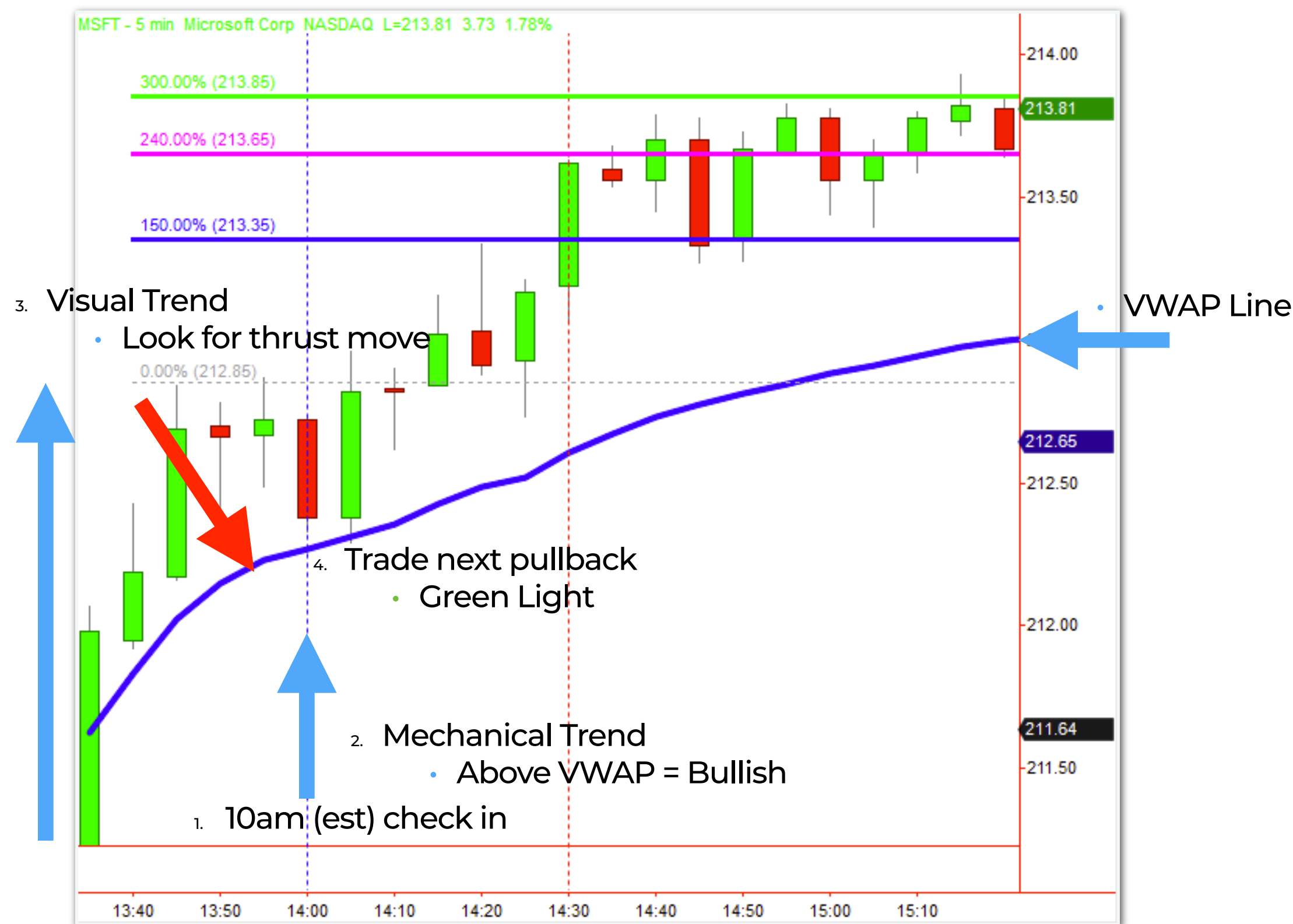


Trade The Next Pullback



# 3 – The “...Classic...” Pattern

## Time Check Steps



1. 10am (est) check in
2. Mechanical trend
  - Above VWAP = Bullish
  - Below VWAP = Bearish
3. Visual Trend
  - Look for “thrust move”
4. Trade next pullback
  - Green Light

At 10am - Check for the “...simple set up...”  
GREEN light / RED light indication

# 1 – The “..Classic..” Pattern



The Classic Pattern



# 2 - The VWAP Flop



# 3 - The Opening V





# 4 - The Opening V + Classic



# 5 - The General

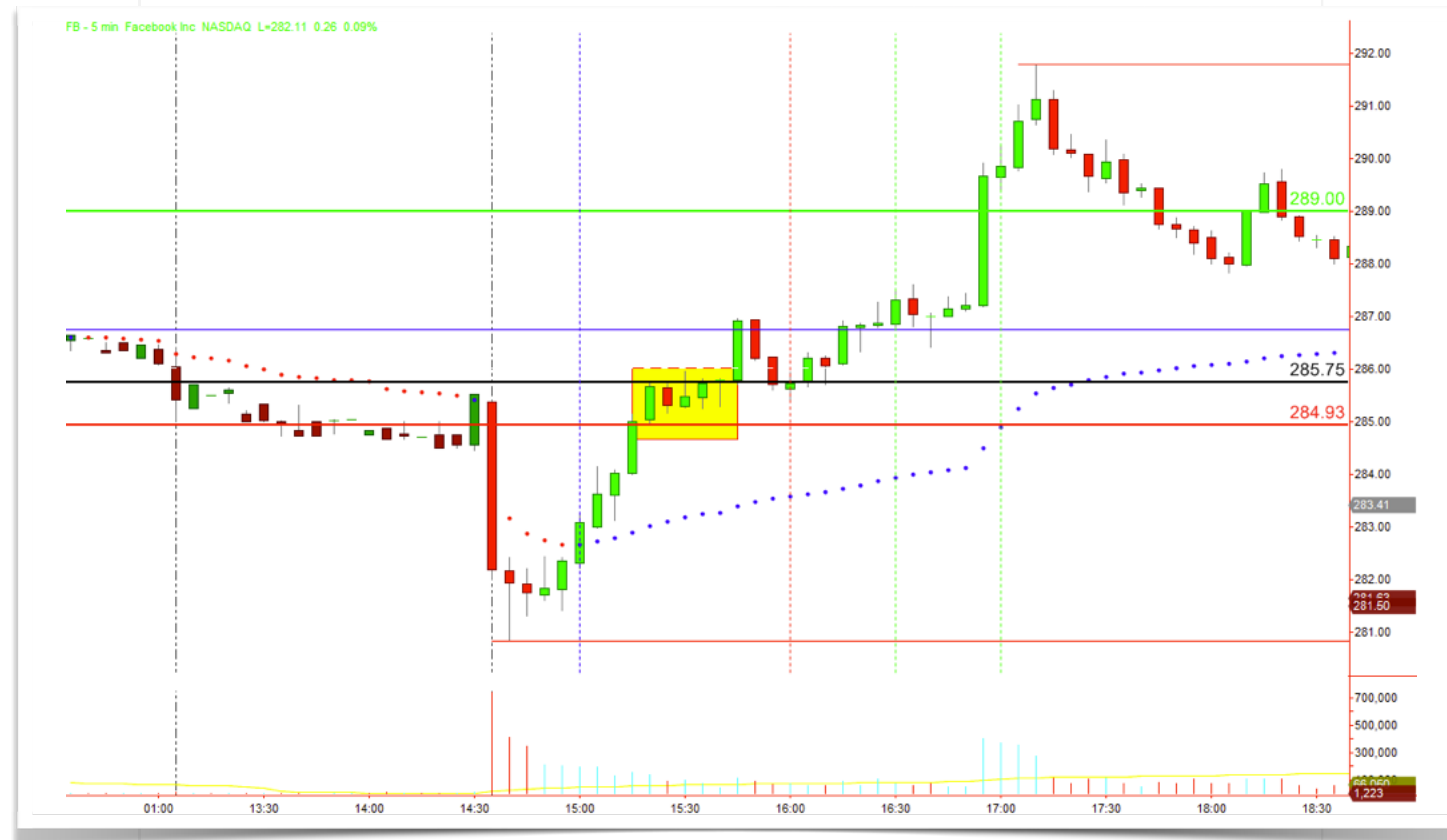




# 6 – The Opening Range BO



# 7 – The Russian Doll





# 8 – The ABC Correction



# 9 – The Bull/Bear Trap



The Von Trap



# The One With Everything



# IF I OFFERED TO HELP YOU PROFIT FROM SHORT TERM EXPLOSIVE STOCK MOVES...



## ...Learn in the Smartest Way Possible



Focus on the **best Stocks AND Times** to trade



**1 simple pattern** - Learned in the next 7 days - (in just 1hr per day)



T.T.E. Trade Management System - (the real secret to success)

### AND



Once Mastered, Potentially increasing results over the next 90 days or less...



Helping you build trade confidence so that you can transition into The best possible trader you can be...

## *Without...*



Stressing over if the markets will go up or down tomorrow - *(in fact you will profit in both directions)*



Spending hours flicking through chart after chart - (just zero in on the most important stocks today)

### OR



Reading through boring company reports trying to divine value

## ... ***WOULD YOU TAKE ME UP ON THAT OFFER?***



# *VWAP Profits*

Lets start the conversation by sending me an email to  
phil @ antivestor . com

*Take Positive Action*

XXX - \$0.00

XXX - VWAP

Stock Gain  
\$3.37 per share

Option Gain  
\$3.37 per share

206.7% ROC

BABA - 5 min Alibaba Group Holding Ltd NYSE L=269.05 9.16 3.52%



VWAP Rule #4 - T.T.E. Management